



Monthly Meeting



August Luncheon

August 2, 2012

11:30 Registration

Location:

Tower Club

100 SE 3rd Ave.

Fort Lauderdale, FL

Speaker:

John Fiore

**Liaison for the Broward
County Marine Advisory
Committee**

**Cost for Members &
Guests \$20**

2012 Officers & Chairs

- Skipper: Captain Karentz
- First Mate: Matthew Valcourt
- Yeoman: Kristene Lundblad
- Purser: Charles Davant
- Bosun: Terry Jones
- Program: Brian Emond
- Activities: Arlene Weicher
- Historian: Elaine Frawley
- Seminar Chair: David Gambach



Lust for Lobster:



If you notice some of your co-workers — or your boss — missing from the job Wednesday, they might be celebrating Florida's biggest unofficial holiday: lobster mini-season.

The two-day recreational sport diving season opened at 12:01 a.m. Wednesday and continues through midnight Thursday statewide. Thousands of scuba divers and snorkelers are trying to catch a limit of 12 lobsters per person per day everywhere but the Keys and Biscayne National Park, where the limit is six.

Officers with the Florida Fish and Wildlife Conservation Commission and other marine law-enforcement units are patrolling the waterways in boats — both marked and unmarked — and in vehicles at boat ramps and marinas to make sure hunters obey lobster and boating safety regulations.

Officers will take extra care to enforce divers-down flag rules. Divers and snorkelers must tow the red-and-white flags while they are in the water. Boats that deploy divers must display a flag at least 20 inches by 24 inches, with a stiffener to keep it unfurled, and it must be visible from all directions. Divers are required to stay within 300 feet of their boat's divers-down flag in open water, and within 100 feet in inlets and channels. When moving from spot to spot, boaters must take down the flag. Lobster hunters must have a valid Florida recreational saltwater fishing license and lobster permit. Their catch must measure greater than three inches on the carapace (head) and be measured in the water. Spearing and taking egg-bearing females are prohibited.



The regular lobster harvest season for commercial and recreational trappers and divers will open Aug. 6 and run through March 31.

By SUSAN COCKING



Fort Lauderdale Mariners Club
PO Box 21750
Fort Lauderdale, FL 33335-1750
www.ftlmc.org



**Fort Lauderdale
Mariners Club**

ITEMS OF INTEREST:
Please submit newsletter ideas
and items of interest to the Editor:
Kristene Lundblad at
KLundblad@LankOil.com

**The Marine Advisory
Committee**

Mission and Purpose:

The Marine Advisory Committee is dedicated to create and maintain a safe and enjoyable recreational boating environment in Broward County for all residents and visitors. Additionally, the Marine Advisory Committee is committed to providing the Broward County Board of County Commissioners with the best possible information, recommendations and advice relating to all marine- and recreational boating-related matters in Broward County.

To review and make recommendations to the County Commission on: marine- and recreational boating-related matters; recreational boating improvement projects submitted by cities and County agencies to the County Commission for the expenditure of funds received by the County from vessel registration fees for the Broward Boating Improvement Program; and enhanced marine safety and education projects submitted by boating safety organizations and law enforcement agencies, via their governing bodies, to the County Commission for the expenditure of local funds from the Broward County Enhanced Marine Law Enforcement Grant program.



Please Join us for Lunch:



**Fort Lauderdale Mariner's Club Luncheon
Thursday, August 2nd, 2012**

Speaker will be

John Fiore

Liaison for the Broward County Marine Advisory Committee

Topic: Broward County Marine Advisory Committee

**Registration starts at 11:30 am
Meeting starts at 12:00
Please RSVP with menu selection**

Starter:

Spinach Salad

Entrée Choice:

Orange Chipotle Glazed Mahi Mahi

OR

Jumbalaya with Chicken & Andouille Sausage

Dessert:

Carrot Cake

Self Parking Tickets will be validated at registration table

No Valet Service

Cost for Members & Guests \$20

**Please log on to www.ftlmc.org
to register and pay with a credit card on "Event Calendar"**

OR

pay with cash or a check at the door

RSVP with menu selection to CaptainTJ@The-Beach.net



Fort Lauderdale Mariners Club
PO Box 21750
Fort Lauderdale, FL 33335-1750
www.ftlmc.org



**Fort Lauderdale
Mariners Club**

ITEMS OF INTEREST:

Please submit newsletter ideas and items of interest to the Editor: Kristene Lundblad at KLundblad@LankOil.com

**Fort Lauderdale
Mariners Club**

About Us

The Fort Lauderdale Mariners Club is dedicated to the promotion of ethical business practices among the sea-going community as well as the circulation of accurate and useful information to the boating community.

Our membership includes both professional and leisure boating enthusiasts, as well as industry experts and professionals in many disciplines from around the world.

Join Us

We welcome your interest in the Mariners Club and invite you to become an active member to the benefit of each of us individually and all of us as a community.

The easiest way to join is to attend a monthly meeting as a guest of a current member.

Request an application form from an officer, complete it and mail it with your check for \$50.00 to the Mariners Club for consideration by the membership committee. Two sponsors are required.

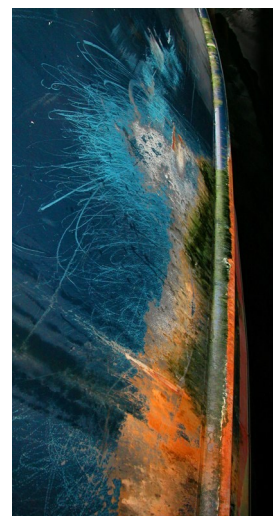
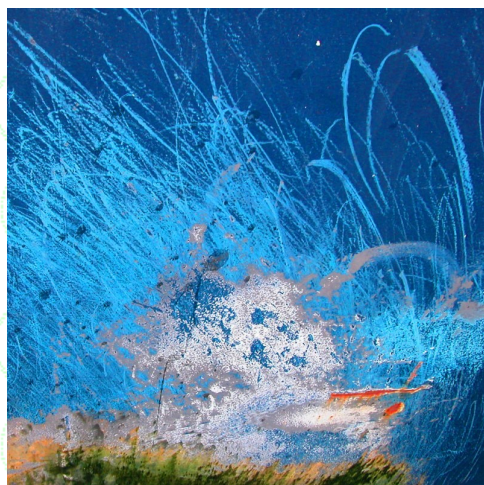
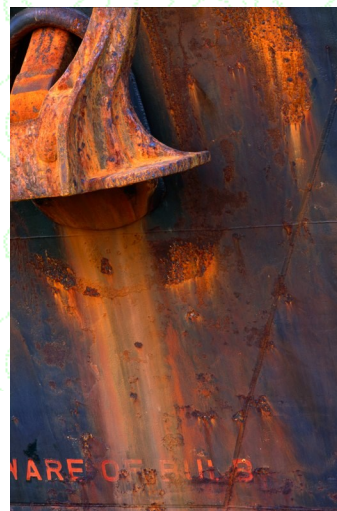
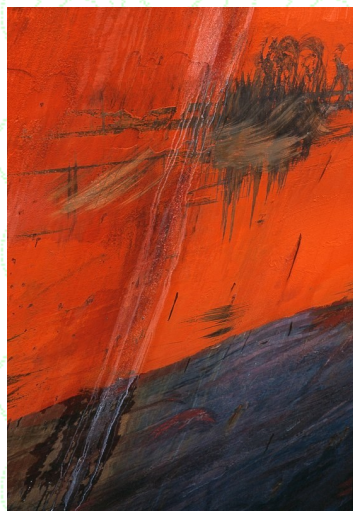
If you want to join and do not know an active member, contact Christopher Karentz ckarentz@sealimited.com

Please visit our website at www.ftlmc.org to find out more about us!



Study - Ship Hulls - 1995 - 2010

THESE PHOTOGRAPHS OF LARGE CARGO CONTAINER SHIPS WERE TAKEN IN VANCOUVER, BC, TACOMA, WA, AND SEATTLE, WA.





Fort Lauderdale Mariners Club
PO Box 21750
Fort Lauderdale, FL 33335-1750
www.ftlmc.org



Fort Lauderdale Mariners Club

ITEMS OF INTEREST:
Please submit newsletter ideas
and items of interest to the Editor:
Kristene Lundblad at
KLundblad@LankOil.com

The Real Meaning...

PFD - Acronym for Personal Floatation Device. This is a multifunction device normally used as a cushion, packing material or sponge. The Coast Guard requires one for each person on board to ensure they have something soft to sit on in case standard seating is lim-

Port – This is what you drink when you are on the boat. Also the left side of the boat, also a place where boats con-

Rudder - This is the device that steers your boat. The rudder is usually the first part of your boat to come off when you hit a rock.



Quasi derelict: term often used in admiralty courts to denote a vessel in status of more or less implied helplessness while not definitely “forever abandoned to mercy of wind and sea”. Thus a vessel may be temporarily abandoned because of fire on board or crew intending to return upon explosion of certain dangerous cargo and hence may be called a quasi-derelict until such return takes place. Also, such status is evident in the case of a crew physically incapable of navigating their vessel.

Example:



REGISTER NOW AND SAVE!
www.Ftlmc.org

The early registration deadline is August 13th

**Fort Lauderdale Mariners Club
23rd Marine Seminar
October 23-24, 2012**

Join us for the Most Important Seminar for Insurance Agents,
Brokers, Underwriters, Surveyors, Admiralty Attorneys
& Marine Industry Professionals.

**Hyatt Regency Pier Sixty-Six
Fort Lauderdale, Florida**



Fort Lauderdale Mariners Club
PO Box 21750
Fort Lauderdale, FL 33335-1750
www.ftlmc.org



Fort Lauderdale Mariners Club

ITEMS OF INTEREST:

Please submit newsletter ideas and items of interest to the Editor:

Kristene Lundblad at
KLundblad@LankOil.com

Thanks to all who submitted materials for this newsletter!



FLORIDA INLAND NAVIGATION DISTRICT

June 11, 2012

COMMISSIONERS

DONN R. COLEE, JR.
CHAIR
PALM BEACH COUNTY

GAIL KAVANAGH
VICE-CHAIR
ST. LUCIE COUNTY

E. TYLER CHAPPELL
TREASURER
BROWARD COUNTY

J. CARL BLOW
SECRETARY
ST. JOHNS COUNTY

BRUCE D. BARKETT
INDIAN RIVER COUNTY

AARON L. BOWMAN
DUVAL COUNTY

S. NORMAN BRAY
NASSAU COUNTY

T. SPENCER CROWLEY, III
MIAMI-DADE COUNTY

DONALD J. CUOZZO
MARTIN COUNTY

NANCY J. FREEMAN
VOLUSIA COUNTY

JONATHAN S. NETTS
FLAGLER COUNTY

JERRY H. SANSOM
BREVARD COUNTY

DAVID K. ROACH
EXECUTIVE DIRECTOR

MARK T. CROSLY
ASSISTANT EXECUTIVE
DIRECTOR

TO: East Coast Waterway Facilities

FM: Florida Inland Navigation District

RE: Hurricane Preparedness Manuals for Marine Interests

The Florida Inland Navigation District has the Hurricane Preparedness Manuals for Marine Interests available in each coastal county of East Florida. Each manual contains generic information that all marine interests need to know. As always these manuals are free and available in any quantity for your distribution to your customers.

These manuals describe how to prepare your vessel or marine facility prior to hurricane season and for an approaching hurricane. Other information provided includes: general hurricane information; general precautions for boat owners with trailerable boats, boats in dry storage, and boats remaining in marina berths; specific precautions for marina owners before, during and after the storm; methods of tying vessels to cleats and pilings; procedures to make a damage claim; and, a boat owner's preparation worksheet.

The enclosed form can be used to place orders by mail or by FAX. Internet (www.aicw.org) orders will also be accepted.

Orders can be placed online at www.aicw.org.

ADMINISTRATIVE OFFICE ON THE INTRACOASTAL WATERWAY IN PALM BEACH COUNTY
1314 MARCINSKI ROAD, JUPITER, FLORIDA 33477-9427 TELEPHONE 561-627-3386 FAX No. 561-624-6480
www.aicw.org



October 25-29, 2012

FORT LAUDERDALE INTERNATIONAL BOAT SHOW



Fort Lauderdale Mariners Club
PO Box 21750
Fort Lauderdale, FL 33335-1750
www.ftlmc.org



**Fort Lauderdale
Mariners Club**

ITEMS OF INTEREST:

Please submit newsletter ideas
and items of interest to the Editor:
Kristene Lundblad at
KLundblad@LankOil.com

Who is this Mariners?



Please email childhood photos of
yourself or other members to:
KLundblad@lankoil.com



Last
Months photo
was...
Mary Lou
Woods!



Boat of the Month



Asean Lady - Built in 2003 by Yantai Raffles, Zhifu Island, Yantai in China

This apparently is the only yacht in the whole wide world to be based on a Proa, an outrigger canoe used for centuries in the South Pacific. And we should be very grateful for that. I do like a bit asymmetrical designs, gives the whole thing more character but this is unfortunately totally and complete over the top. I'm sure the designers and calculators have done a good job and from what I remember from my stability-classes a small outrigger does generate a lot of stability for a vessel but I just don't know in this case...she is strange and to a lot of people she might be ugly but to me she is just utterly strange. Although I do admire the so overrated "thinking outside the box" they did here.

Word/Term of the Month:

pipe down, v., to stop talking, to become quiet, 1900. On board ship, the boatswain would use a pipe to signal various commands. To *pipe down* was to dismiss the watch and send them to bed, 1833.

Question: If you find a turtle without a shell, do you call him 'homeless' or 'naked'?

GETAWAY WEEKEND:

JULY 27-29, 2012

Hyatt Coconut Palms, Bonita Springs

Look for pictures next month!